

Demolition shear Top-Cut



System shears for universal use

- Special rapid-action valve for faster movements
- 4 jaw models for different applications - exchangeable by the customer
- For excavators from 16 up to 45 tons.
- Manufactured fully in special wear-resisting steel
- Hydraulic 360° endless rotation
- Quick change of breaking teeth without special tools

Technical details (Subject to change)

ATTENTION: the hydraulic values indicated here after are not to be considered for the regulation of the excavator – please use the instructions!

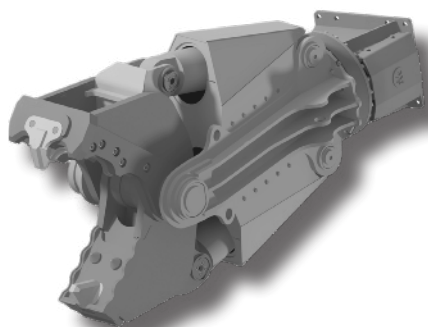
Model	TC 550	TC 700	TC 800
Possible jaws	Universal (U) H-jaw (H) Srcap (S)	Universal (U) Aligator (A) Srcap (S)	Universal (U) Aligator (A) Srcap (S)
Weight without adapter, kg	1.885 (U) 1.835 (H) 1.835 (S)	2.250 (U) 2.480 (A) 2.200 (S)	3.300 (U) 3.170 (A) 3.170 (S)
Max. Jaw opening	550 (U) 740 (H) 470 (S)	700 (U) 870 (A) 470 (S)	800 (U) 890 (A) 600 (S)
Closing time*, sec.	1,5	1,6	1,9
Opening time*, sec.	3,4	3,5	4,1
Excavator weight**, to	> 16	> 20	> 24
Hydraulic data			
Open/close, max. pressure, bar	350	350	350
Open/close, oil flow, l/min	200	250	300
Rotate, max. pressure, bar	200	200	200
Rotate, oil flow, l/min	20 - 25	20 - 25	20 - 25

* Times for closing / opening = calculated values

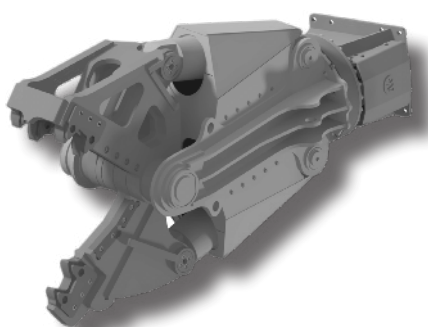
** Standard value for excavator with standard boom

Shear / Jaw models

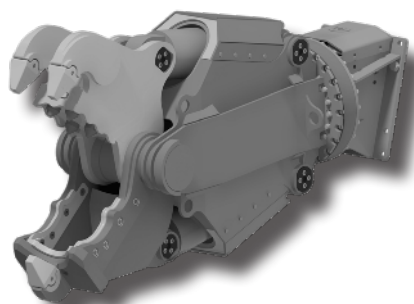
Universal (U)



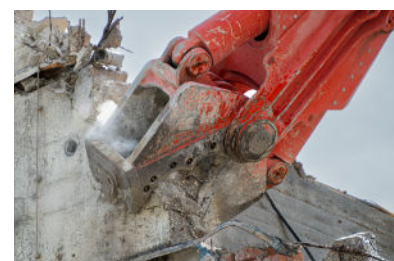
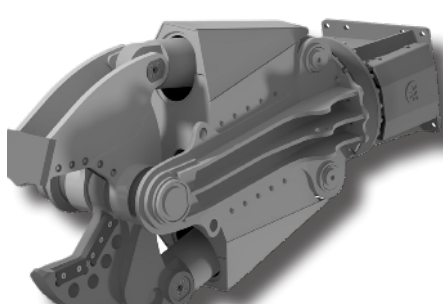
Aligator (A)



H-Jaw (H)



Scrap (S)



For lubrication
we recommend:
WIMMER PB-Grease



WIMMER Hartstahl GmbH & Co KG und WIMMER Felstechnik GmbH
Industriestraße 3 | A-5303 Thalgau, AUSTRIA | Tel. +43 (0)6235 6655-0

office@wimmer.info



wimmer.info