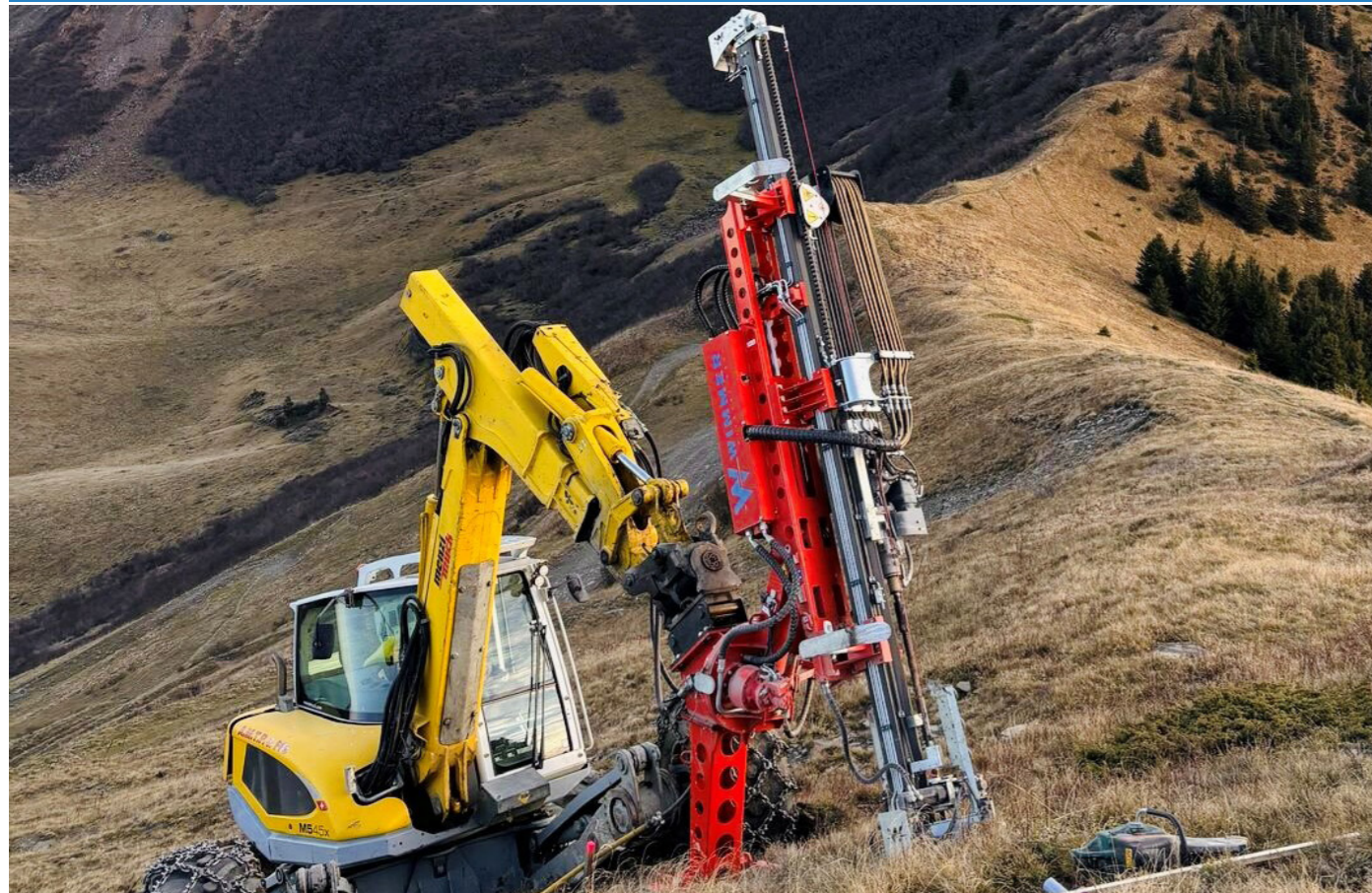


Drilling Unit AB 2300 T | AB 2300 T Climb



Drilling Unit AB 2300 T | AB 2300 T Climb



Options for all systems

- Clamp breaking device
- Angle indication
- Dust collector
- Compressor on the excavator
- PLC automatic
- Wimmer Cockpit
- Reinforced feed
- Single/3-fold rod changer (not with Climb-Version)

Standard equipment

- ✓ Hose roller
- ✓ 360° endlessly rotatable, 90° tiltable
- ✓ independant electric power supply
- ✓ Radio remote control - all drilling functions proportionally controlled
- ✓ Blank firing protection
- ✓ Anti-jamming automation
- ✓ Hollow protection

and technical modifications reserved. Protected by copyright. Misprints and printing errors reserved.. Version 4/21

Range of application

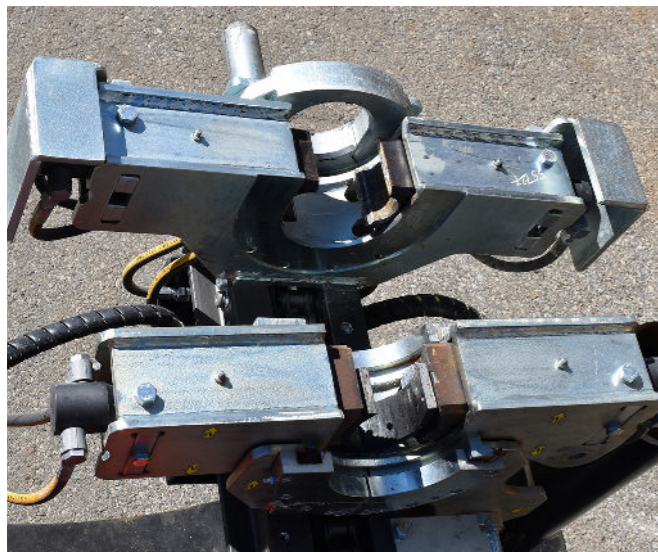
- Injection anchor drillings
- Anchor and blast hole drillings
- Down-the-hole drilling / Overburden drillings

Ultra-light drilling unit for excavators >10 tons

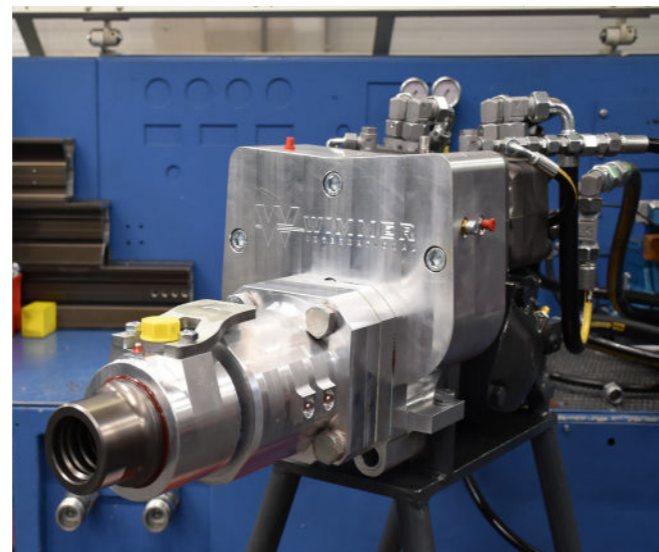
- Attachment to crawler excavators and walking excavators
- Large selection of carriage - hammer - combination
- Light and stable high performance profile
- Large standard equipment package, many additional options



	AB 2300 T-4	AB2300 T-23	AB 2300 T-20	AB 2300 T-25	AB2300 T-20-D	AB2300 T-25-D
Drill Hammer	WHL300	WHL 300-23	WHD 1002	RH3X + Schlagw. Typ20	RH200	RH3X
Weight (kg)	ca. 1250 1380	ca. 1400 1530	ca. 1250 1380	ca. 1350 1430	ca. 1400 1530	ca. 1490 1580
Standard Climb						
Drilling diameter max. (mm)	63	63 / 120 (anchor)	63/120 (anchor)	63/120 (anchor)	130 (down-the-hole)	120 (down-the-hole)
Torque (Nm)	400	1150 / 2300 switchable	1060 / 2120 switchable	2500	1060 / 2120 switchable	2500
Drilling Unit- Shenk adapters						
Blasthole drilling	Standard: R32 Opton: R38, T38	R32, R38, T3	R32, R38, T38	R32, R38, T38	-	-
Anchor drillings	-	R32,R38,T45, R51, Titan 30 - 73	R32,R38,R44, Titan 30 - 40	R32,R38,H55, Titan 30 - 40	-	-
Down-the-hole-drilling	-	API 2 3/8"	API 2 3/8"	API 2 3/8"	API 2 3/8"	API 2 3/8"
Rod length (mm)	3660 3050	3660 3050	3660 3050	3660 3050	3660 3050	3660 3050
Standard Climb						
Total length (mm)	5935 5335	5935 5335	5935 5335	5935 5335	5935 5335	5935 5335
Standard Climb						
Oil supply (L/min)	120 @ 160 bar	140 @ 200 bar	125 @ 200 bar	140 @ 200 bar	95 @ 200 bar	95 @ 200 bar
Required motor performance (kW)	40	58	52	58	40	40
Oil pressure @excavator (bar)	220	230	220	230	250	250
Carrier to	> 10	> 10	> 10	> 10	> 12	> 12
Execution						
Rotation/Tilting	360°endlessly rotatable/ 90° tiltable	360°endlessly rotatable/ 90° tiltable	360°endlessly rotatable/ 90° tiltable	360°endlessly rotatable/ 90° tiltable	360°endlessly rotatable/ 90° tiltable	360°endlessly rotatable/ 90° tiltable
Feed shift (mm)	780 780	780 780	780 780	780 780	780 780	780 780
Standard Climb						
Clamping device	single	single	single	single	Clamp-break	Clamp-break



Clamp-Break device



T23 hammer enables three different flushing head variants



Eurodrill WHD 1002 hammer



Hose Roller